

CATALOGUE

ACCESS SOLUTIONS



WELCOME TO ESSENTRA

We are global manufacturers and distributors of vital component parts for hundreds of markets and thousands of products. We're proud of what we do and believe that even the smallest products have a big part to play.



12

Manufacturing
Facilities

>1

BILLION
Parts in
stock

30,000

Products
available

47

Sale & Distribution
Operations

4

R&D
Centres

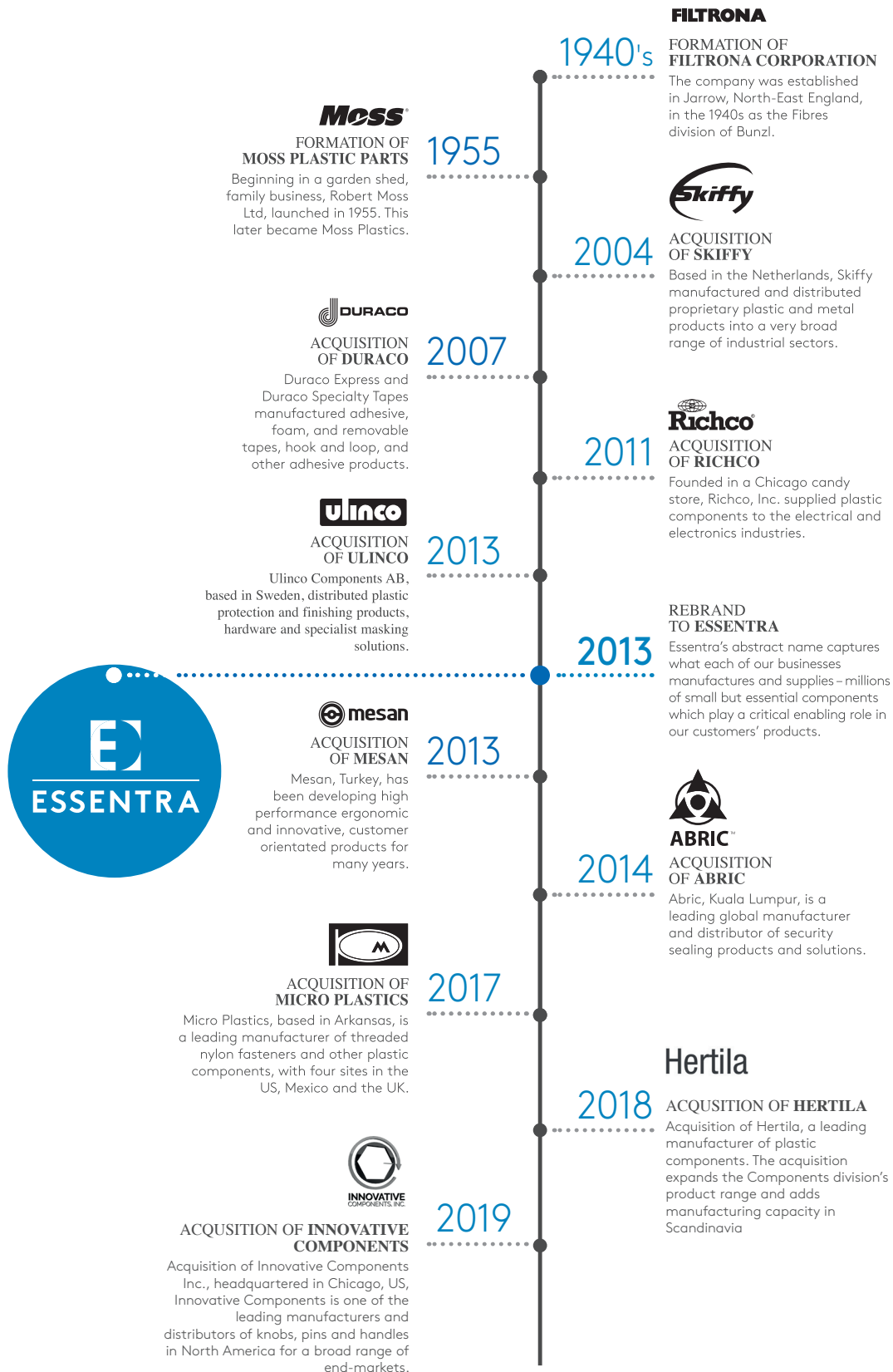
GLOBAL REACH WITH LOCAL SUPPORT

We bring together the best products,
ideas and distribution.



WHO IS ESSENTRA COMPONENTS?

Whether you have a global or local project, with over 75 years' experience, and worldwide coverage, we are here to help you.



ACCESS SOLUTIONS

Whatever your project demands, we can help with a comprehensive range of access hardware and custom solutions.

Our essential solutions are delivered with consistent quality, reliability and supported by outstanding customer service. With free CAD's, samples and specialist advice available, there is no better choice for your solutions provider.



INDUSTRIES

Our expertise ranges across multiple industries, supported by outstanding customer service. We can reduce your lead times, and provide custom solutions and specialist advice to help you achieve your business goals.



Indoor & Outdoor
Cabinets



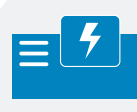
IT Cabinets



Transformers



Industrial
Machinery



Power
Generators



HVAC



Commercial
Vehicles



Rail
Transportation



Road
Transportation



Food
Industry



Diversified
Applications



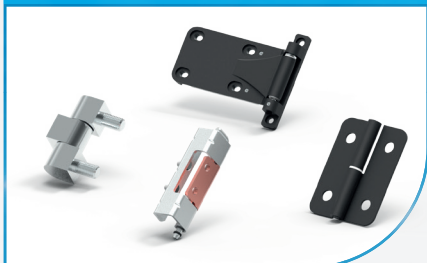
Medical
Devices

LOCKS/LATCHES



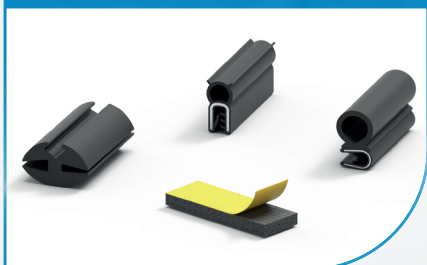
Our locks give you what you need for every application. Materials range from durable polyamide and steel cams to corrosion-resistant stainless steel. With locks for both indoor and outdoor applications, high or low security needs, our products combine both form and function.

HINGES



You're spoiled for choice with our range of high quality hinges. Be it plain or flush mounted doors or cabinets, concealed hinges or side hinges. Made from high security and corrosion resistant materials, there is a hinge for all your needs.

GASKETS



Prevent liquid or gas leaks with our high-performance gasketing & sealing solutions. Easy to apply and available in a range of materials, including PVC, EDPM, rubber blends, and a blend of neoprene, nitrile and PVC.

ACCESSORIES & HANDLES



An extensive range of accessories are designed and manufactured for a variety of industries and applications using rubber, plastic and aluminum. Manufactured with ergonomics and aesthetics in mind, our handles utilise reinforced plastics and aluminum to assure an easy fitting.

ELECTRONIC



ELS, our integrated access control system incorporates electromechanical locks, access control units and a monitoring system complete with system sensors. The sensors can detect use, allow management of temperature and maintain cabinet security. Use an RFID card, keypad or remote control to manage door access and retrieve detailed reports of cabinet status whenever you need it.

CUSTOM SOLUTIONS

Sometimes you may not find the perfect solution amongst our portfolio of standard products. You may require a small variation, an alternative colour, material or size.

Talk to our in-house team of design engineers and work directly with our R&D and manufacturing centres to create a bespoke solution to meet your needs.

We utilise 3D printing technology to showcase our designs which ensures your specifications are met and assists in expediting lead times from quotation to delivery.

Capabilities

- Design bespoke products
- Range of colour choices
- Customer logo requirement

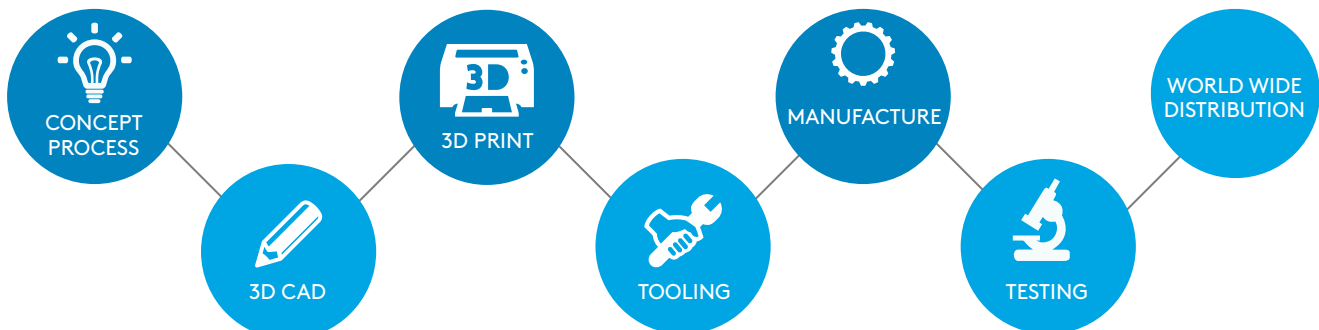


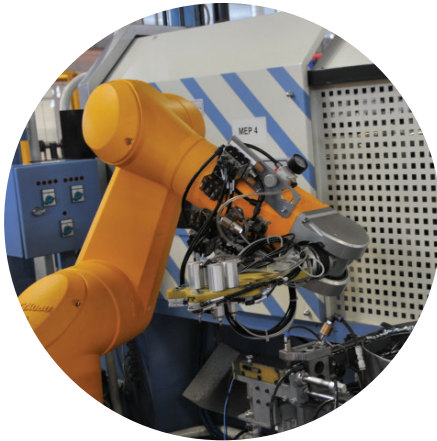
R&D

Facilitated by our state of the art R&D facilities we are enabled constantly pursuing innovation to offer new and alternative solutions to you and your customers everyday problems.

Technical capabilities

- Proven in-house engineering design team
- All items available in 3D CAD
- Advantage of 3D printing
- Cross-sector experience





PRODUCTION

Our philosophy in production centres on delivering value to our customers by producing high quality components, on time and at low cost. With the introduction of CNC controlled machines and robot technologies, a significant increase in capacity and quality has been achieved.

Manufacturing technology

- Zinc Die Casting
- Aluminium Die Casting
- Plastic Injection Moulding
- Stamping
- Machining
- Polyurethane Sealing Foam Technology
- Barrel, Cylinder, Keys Technology
- Tool Manufacture Technology
- Custom Machines (Sand blasting ,Laser marking etc)
- Powder Coating



QUALITY

We understand that continuous improvement in all of our processes drives customer satisfaction. We ensure our products exceed customer expectations, whilst adhering to technical and legal requirements. Our products are manufactured to comply with RoHS standards, and meet obligations concerning the Registration, Evaluation, Authorisation, and Restriction of Chemicals (REACH)

We operate a stringent quality assurance programme, ensuring procedural controls are applied to all activities that affect the quality of our products and services.

Our Quality Approved Certificates:

ISO
9001:2015

Quality
Management
Systems

IATF
16949

Automotive
Quality
Management

ISO
45001

Health and Safety
Management
Systems

ISO
50001:2001

Energy
Management
Systems

ISO
14001:2015

Environmental
Management
Systems

ISO
27001:2013

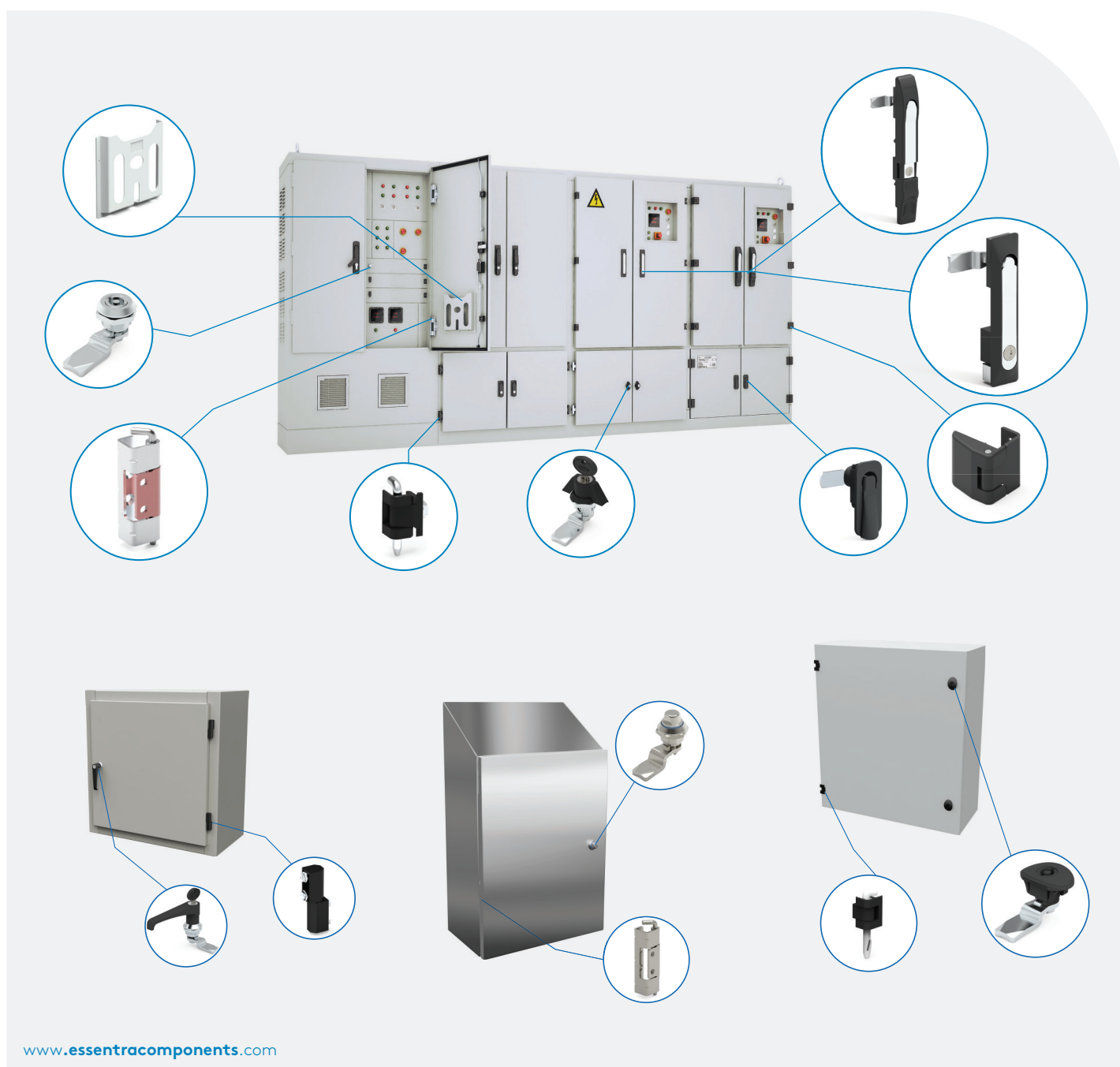
Information
Security
Management



A CLOSER LOOK

INDOOR CABINETS

Mesan Locks boasts an extensive range of secure switchgears, primarily for use on indoor cabinets. The range covers Swinghandles, Linear Locking Systems, 3 Point Locking Systems, Multipoint Locking systems, Quarter Turns, Camlocks, Hinges, Gaskets, and Project Holders.





A CLOSER LOOK

OUTDOOR CABINETS

Specialist cabinet locks are required for a variety of applications not limited to ADSL, Telecommunication and CCTV applications. We offer a wide range of products in this sector including high security 1/2 din locks and RC2 standard locks.

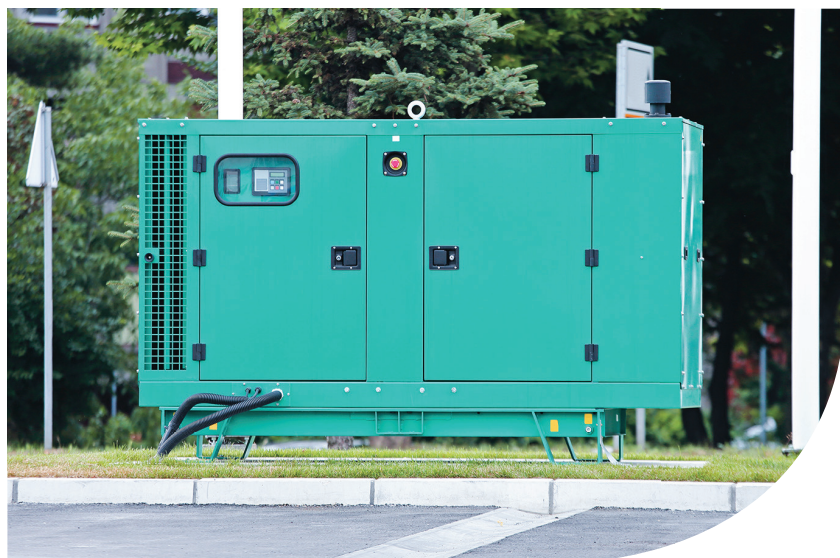


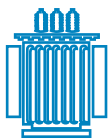


A CLOSER LOOK

POWER GENERATORS

Our eclectic product range means we've got a solution no matter your needs. With our customer-centric designs, alternative solutions and our high-standard products, we can meet all your needs for both basic and sound proof canopies.





A CLOSER LOOK

TRANSFORMERS

When working with transformers, it's important that all entry points are kept secure, particularly areas that contain medium voltage cells. Our solutions are high quality and secure, including our technically designed explosion resistant hinges and locks.

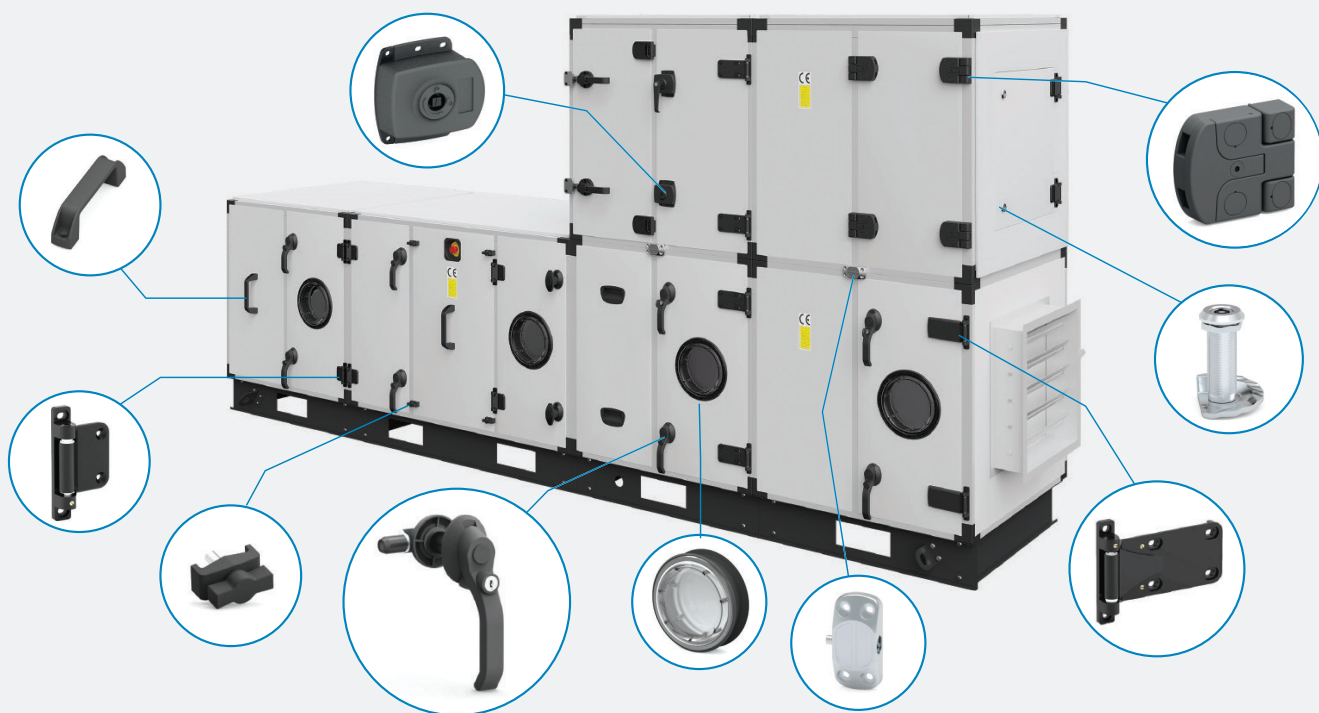




A CLOSER LOOK

HVAC

Outdoor HVAC cabinets need to cope with the differing environments in which they are used while ergonomics, functionality and modular system solutions are common needs. Our solutions are designed with this in mind so no matter the application, our offering will meet your needs.





A CLOSER LOOK

IT CABINETS

With sensitive data becoming more and more prevalent, it's now more important than ever to securely manage your electronic cabinets. We've designed a range of high-tech Electromechanical Locking Systems to help monitor and track internal environments and entry to cabinets.

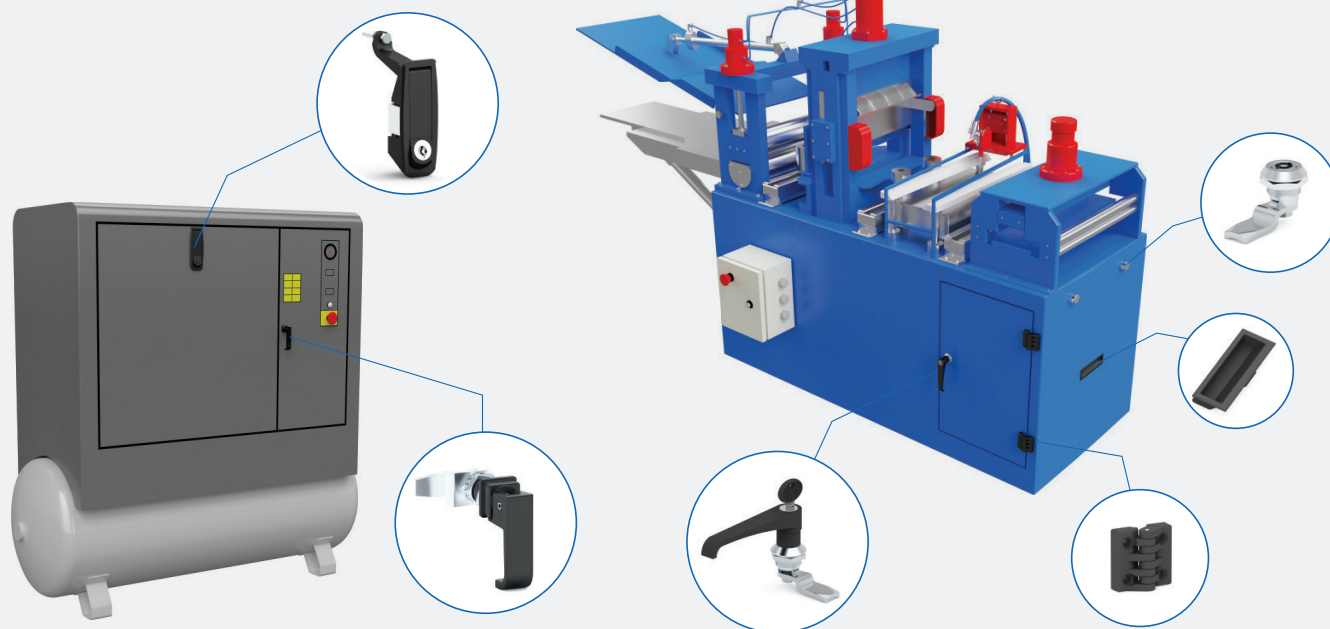




A CLOSER LOOK

INDUSTRIAL MACHINERY

Whether you're building indoor or outdoor machines, sealing, noise isolation and vibration reduction are some of your most important considerations. Mesan Locks offers a wide range of solutions designed to meet your specific requirements.

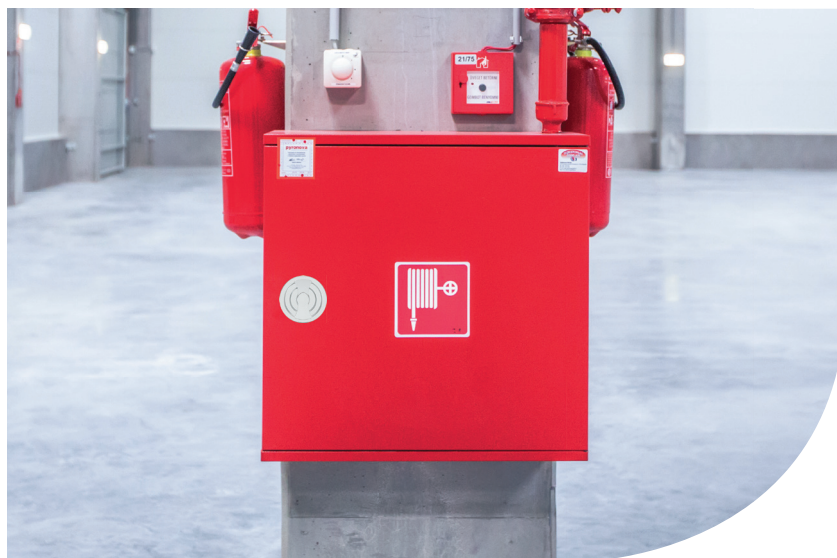




A CLOSER LOOK

DIVERSIFIED APPLICATIONS

Our expertise spans across many industries, allowing catered solutions to be produced for a number of non-standard applications.

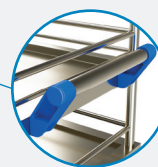
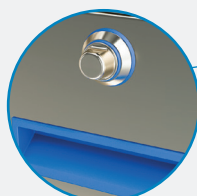
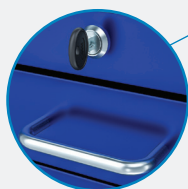
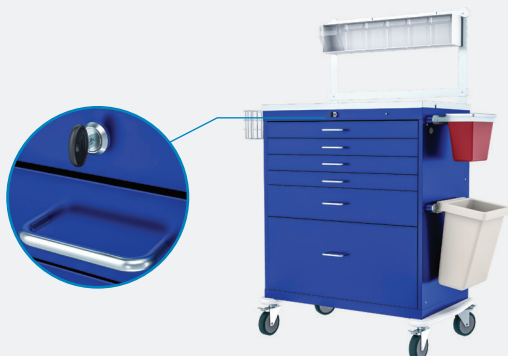
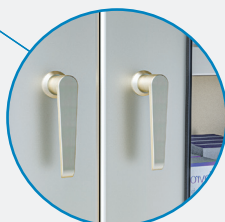




A CLOSER LOOK

MEDICAL DEVICES

We offer a wide range of access solutions for the health industry, including essential equipment and medical With our mechanical and electronic locks, hinges, handles, accessories and fittings, we provide security, safety and comfort with hygienic standards to healthcare professionals.

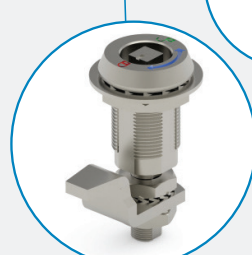




A CLOSER LOOK

RAIL TRANSPORTATION

Suitable for both subway trains and high speed trains our compression latches, are certified to DIN EN 60068-2-64 [04/2011]. Many of our sealing products, trigger latches and heavy duty hinges are also UL 94 certified.





A CLOSER LOOK

COMMERCIAL VEHICLES

Construction vehicles, heavy-duty trucks and utility trucks all have one thing in common. They need robust and safe handles, locks and hinges. We provide these vehicles with pretty much any solutions you can think of for both the interior and exterior.

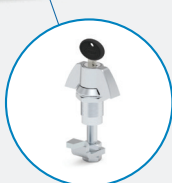




A CLOSER LOOK

ROAD TRANSPORTATION

We produce solutions for commercial car, caravans, minibus, and buses. Our range is specifically catered to the needs of these applications, offering paddle latches, quarter turn locks and latches, custom hinges, sealing products, and many other functional solutions.

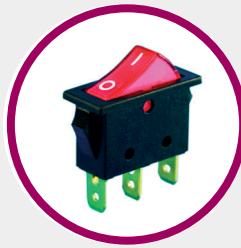


JUST A FEW OF OUR **STANDARD PRODUCTS**

FOR ELECTRICAL



IP65 Push Buttons



Rocker Switch



Standard Grommets

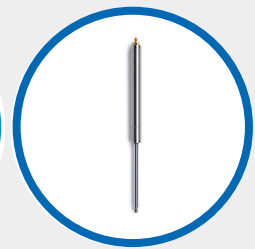
FOR ENCLOSURES



Draw Slides



Adjustable Force Gas Struts

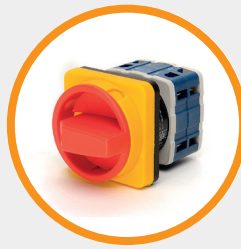


Metal Gas Struts

FOR EQUIPMENT CONTROL



Index Plunger



Cam Switches



Handles

AND THERE IS MORE...



Masking Plugs



Tapered Caps



Masking Tapes

REQUEST OUR FULL COMPONENTS CATALOGUE!

**OVER 30,000 STANDARD PRODUCTS
FOR FAST DISPATCH**



Nylon Cable Glands



Vent Plugs



Twist Ties



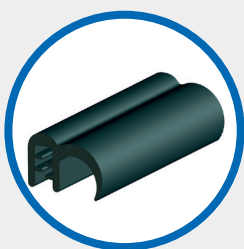
Cable Ties



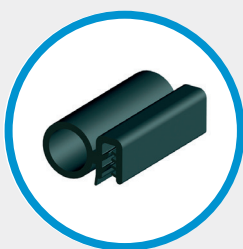
Key Operated Push Button



EMI Gasket



Flipper Gasket



Side Bubble Gasket



Heavy Duty Lid Stay



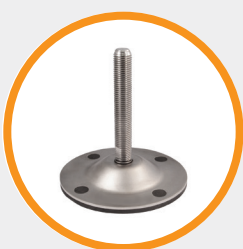
Vibration Mounts



Handwheels



Industrial Feet



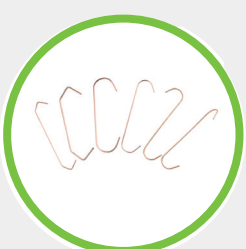
Machine Feet



Cam Levers



Castors



Support Hooks



Masking Bags



Screw Rivet Fasteners



Quarter Turn & Snap Latches



Rack Panel Quarter Turn Fastener

GO ONLINE:

- REQUEST FREE SAMPLES
- 3D CAD DRAWINGS
- ORDER ONLINE



PRODUCT GROUPS



SWINGHANDLES
24 – 51



ROD-LATCH SYSTEM
52 – 87



HEAVY-DUTY LOCKS
88 – 115



MISCELLANEOUS PRODUCTS
116 – 167



CAMS, KEYS, RODS & ROD GUIDES
168 – 191



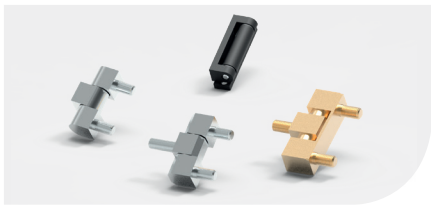
QUARTER-TURN LOCKS
192 – 245



CAM LOCKS
246 – 271

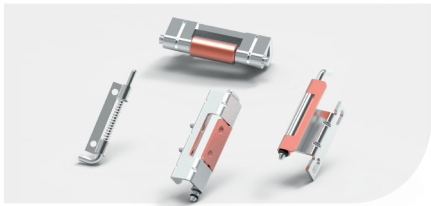


FURNITURE & STEEL CUPBOARD LOCKS
272 – 285



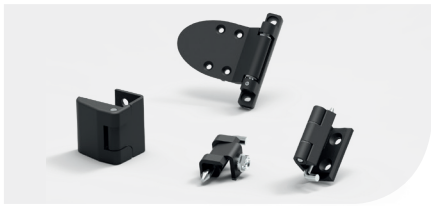
SIDE HINGES

286 – 299



CONCEALED HINGES

300 – 333



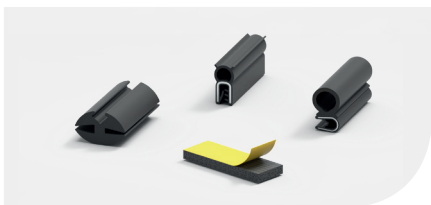
CORNER HINGES

334 – 351



FLAT HINGES

352 – 385



GASKETS

386 – 401



HANDLES

402 – 419



ACCESSORIES

420 – 441



STAINLESS STEEL PRODUCTS

442 – 517



ELECTRONIC LOCKING SYSTEM

518 – 547

PRODUCT CODE DESCRIPTIONS

DESCRIPTIONS

GROUP CODE

M

MATERIAL

F

FINISH

DD

CYLINDER - DRIVER

CC

CAM

V

VERSION

DT

DOOR THICKNESS

L

LENGTH

H

HEIGHT

LH

HOUSING LENGTH

P

PIN

001

RIGHT HAND

002

LEFT HAND

1

OPTIONAL/ IP 65

1

OPTIONAL/ PADLOCK HASP

2

OPTIONAL/ DUST CAP

12

OPTIONAL/ PADLOCK HASP + DUST CAP

MATERIALS AND FINISH OPTIONS

M

MATERIAL

1

Zamak

2

Plastic

3

Brass

4

Stainless steel

5

Aluminium

6

Steel

F

FINISH

0

No finish

1

Chrome

2

Black coated

3

Zinc plated

7

Matt anodized

EXAMPLE PRODUCT CODE

Group Code	Housing		Knob		Cam
062	M	F	M	F	CC
	↓	↓	↓	↓	↓
062	1	1	2	0	42

062

Quarter turn – wing knob

1

Zamak material (Housing)

1

Chrome plated (Housing)

2

Plastic material (Knob)

0

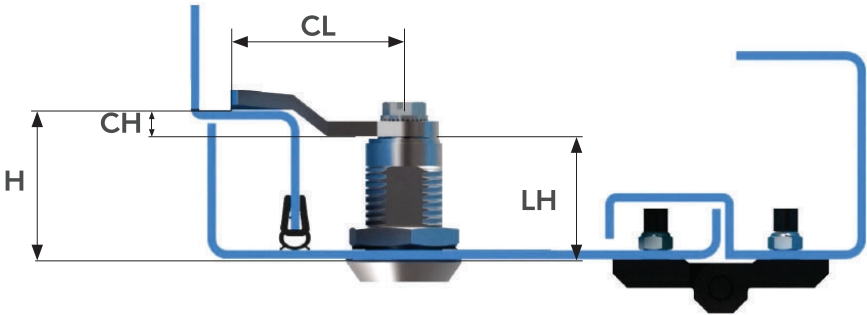
No Finish (Knob)

42

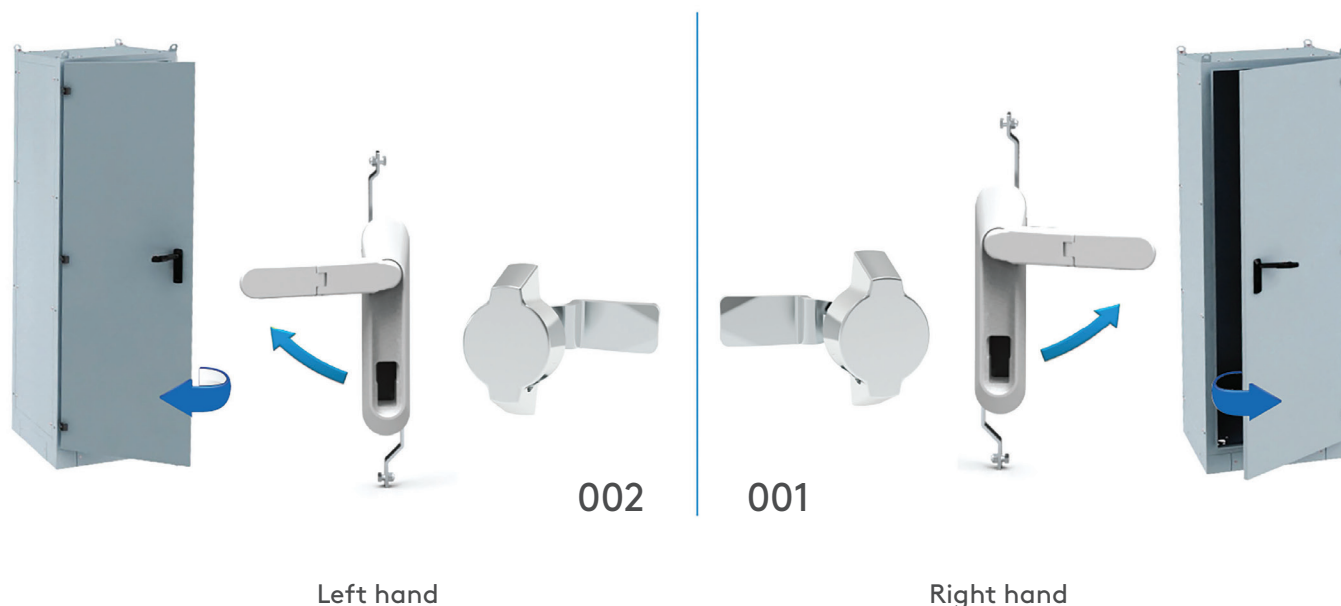
Cam: 7x49 mm

TECHNICAL DRAWING DESCRIPTIONS

- H: Grip
LH: Housing length
CL: Cam length
CH: Cam height



DOOR-LOCKING DIRECTIONS



SYMBOLS

	RoHS Compliant		Foam gasketing		Position control
	Anti Bacterial		Clip-in assembling		Lift-off hinge
	IP 65 sealing level		Padlock version		Side hinge
	IP 66 sealing level		Profile cylinder		Concealed hinge
	IP 54 sealing level		Outside the gasketing		Corner hinge
	Suitable for left or right hand		Inside the gasketing		Flat hinge
	Left hand only		Compression specification of lock		Three dimensions
	Right hand only		Earthing		Two dimensions

EXPLANATIONS

- * All dimensions are in millimetres (mm)
- * We comply with RoHS
- * Finishes comply with TS EN 12540
- * We reserve the right to make changes to product specifications without prior notice
- * Our polyamide products and EPDM gasket products can be produced as flame resistant to comply with the UL94 standard
- * All images, text and designs contained within this catalogue remain the copyright of Essentra Components